

Overview

Just a short trip this time to the Runway Visitor Park from 1130 - 1400. A great little venue for the family with plenty to keep the little ones entertained. Photography is limited especially with before noon strong sunlight. They have commentary which can be informative along with a shop, restaurant, toilets, play frame, fairground attractions and preserved aircraft. These include:-

- G-AWZK HS Trident 3
- G-BOAC BAC Concorde
- G-IRJX Avro RJX100
- XV231 HS Nimrod MR.2

There's plenty to see including A380's which always draws a crowd and on this occasion a 737-Max8 which had only been in service 2 days (G-TUMY), there's also still an ex Thai Airways (HS-TBA) sat at the back of the hangers awaiting its fate.

Aer Lingus UK			
G-EILA	Airbus A330-301	1106	
Air Canada			
C-GHQQ	Boeing 787-8 Dreamliner	35263	
Air France			
F-HZUR	Airbus A220-371	55198	
Air Transat			
C-GUBF	Airbus A330-243	314	
AirTanker (op for Jet2.com)			
G-VYGM	Airbus A330-243 Voyager MRTT	1601	
Austrian Airlines			
OE-LWE	EMBRAER ERJ-195LR (190-200LR)	19000423	
British Airways			
G-EUUU	Airbus A320-232	3351	
Brussels Airlines			
OO-SSB	Airbus A319-111	2400	
Cathay Pacific Airways			
B-LRL	Airbus A350-941	72	
Eastern Airways (op for KLM Cityhopper)			
G-CLYU	EMBRAER ERJ-190LR (190-100LR)	19000310	
EasyJet			
G-EZTA	Airbus A320-214	3805	
G-EZTG	Airbus A320-214	3946	
G-EZTN	Airbus A320-214	4006	
G-EZTT	Airbus A320-214	4219	
G-EZTX	Airbus A320-214	4286	
G-EZUF	Airbus A320-214	4676	
G-EZUS	Airbus A320-214	5104	
G-EZWI	Airbus A320-214	5592	
G-EZWS	Airbus A320-214	6011	
G-UZLT	Airbus A320-251N	11920	
Egyptair			
SU-GFS	Airbus A321-251NX	11231	
Emerald Airlines & Emerald Airlines UK (op for Aer Lingus)			
EI-FAV	ATR 72-600	1105	
G-CMMK	ATR 72-600	1297	
Emirates			
A6-EEQ	Airbus A380-861	141	
A6-EFU	Boeing 777-F	67463	
Hainan Airlines			
B-1020	Airbus A330-343HGW	1837	
Jet2.com			
G-DRTE	Boeing 737-8K5	28228	
G-DRTY	Boeing 737-8AS	33554	
G-GDFU	Boeing 737-8K5	30416	
G-JZHK	Boeing 737-8MG	63145	
G-SUNH	Airbus A321-251NX	11806	
KLM Royal Dutch Airlines			
PH-BXV	Boeing 737-8K2	30370	
Kuwait Airways			
9K-AKS	Airbus A320-251N	11187	
Loganair			
G-SAJH	EMBRAER ERJ-145EU	145134	
G-SAJO	EMBRAER ERJ-145MP	145216	
Lufthansa			
D-AISR	Airbus A321-231	3987	
Pegasus Airlines			
TC-NBJ	Airbus A320-251N	7703	
TC-NBT	Airbus A320-251N	8214	
TC-NCA	Airbus A320-251N	8868	
Portugalia Airlines (op for TAP Express)			
CS-TPS	EMBRAER ERJ-190LR (190-100LR)	19000493	
Ryanair, Ryanair UK, Malta Air & Buzz			
9H-VUF	Boeing 737-8200MAX	65082	
EI-DLW	Boeing 737-8AS	33599	
EI-EBD	Boeing 737-8AS	37522	
EI-EBE	Boeing 737-8AS	37523	
EI-EKG	Boeing 737-8AS	35021	
EI-EMO	Boeing 737-8AS	40283	
EI-ENH	Boeing 737-8AS	35033	
EI-HMX	Boeing 737-8200MAX	65893	
EI-IHA	Boeing 737-8200MAX	67081	
EI-IJK	Boeing 737-8200MAX	67111	
EI-IJN	Boeing 737-8200MAX	62373	
G-RUKA	Boeing 737-8AS	44687	
G-RUKL	Boeing 737-8AS	33572	
SP-RZG	Boeing 737-8200MAX	62320	
Saudi Arabian Airlines			
HZ-AR26	Boeing 787-10 Dreamliner	40057	
Singapore Airlines			
9V-SJA	Airbus A350-941	364	
SmartLynx Airlines Malta (op for TUI)			
9H-ARI	Boeing 737-8MAX	42826	
9H-ETA	Boeing 737-8MAX	60458	
Sun Express			
TC-SEJ	Boeing 737-8HC	61171	
TUI Airways & TUIfly Nordic			
G-TAWO	Boeing 737-8K5	37255	
G-TAWW	Boeing 737-8K5	41663	
G-TUIH	Boeing 787-8 Dreamliner	37229	
G-TUKV	Boeing 737-8K5	35149	
G-TUMB	Boeing 737-8MAX	44595	
G-TUMG	Boeing 737-8MAX	44600	
G-TUMY	Boeing 737-8MAX	44619	
SE-RFZ	Boeing 787-9 Dreamliner	44579	
Turkish Airlines			
TC-JSN	Airbus A321-231	6508	
TC-JTP	Airbus A321-231	7516	
Virgin Atlantic Airways			
G-VLUV	Airbus A330-343HGW	1206	
G-VNYC	Airbus A330-343HGW	1315	
Vueling Airlines			
EC-NLY	Airbus A321-211	6719	

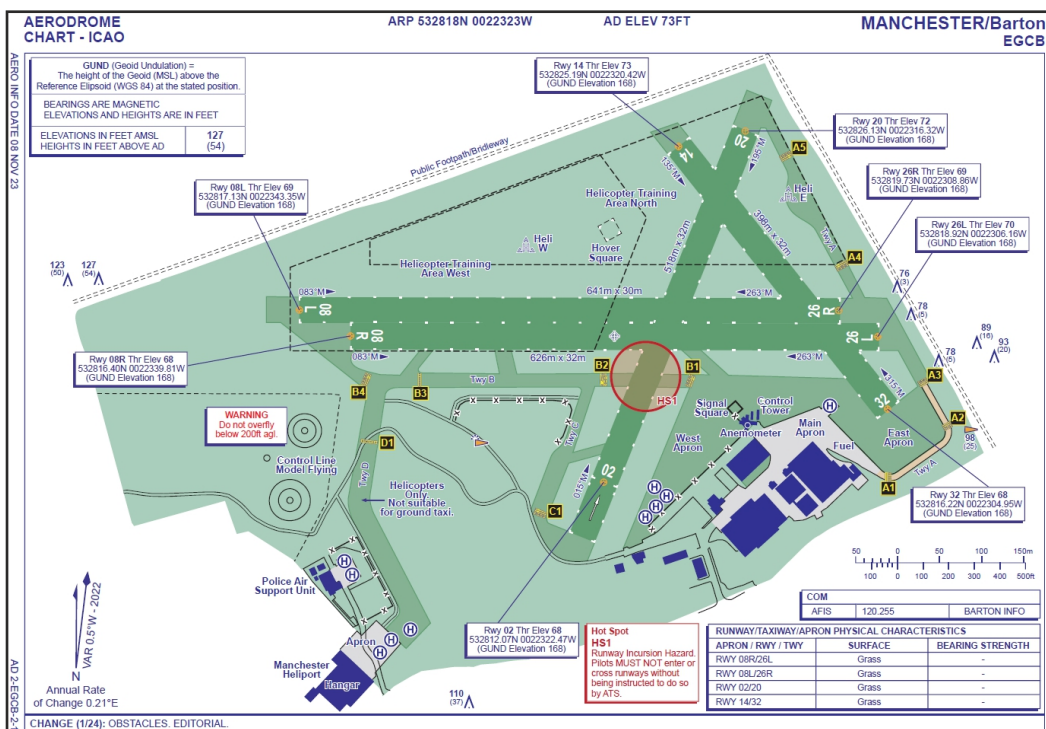
As always there is the fair share of corporate activity

Corporate

D-CSMC	Cessna 560XL Citation Excel XLS+	560-6168	Silver Cloud Air
F-HEMI	Cessna 525A CitationJet CJ2+	525A0479	Valljet
G-MDSE	Pilatus PC-12/47E NGX	2322	Corporate
G-ZNTJ	Bombardier Learjet 75	45-562	Zenith Aviation
OK-MSM	Pilatus PC-12/47E NGX	2252	OK Aviation

A mandatory quick pop in to Manchester Barton Aerodrome between 1430 and 1610 on the way home which has one of the oldest, if not the oldest active tower in the UK. The first floor of which is an observation deck. There's also a great cafe/bar/restaurant called The Departure Lounge and again a play area to keep those kids entertained. Movements can be varied because of the nature of the beast that is GA so when the weather is good there is constant activity. G-YROA left by road shortly after I arrived and G-JADN made my 3rd PC12 NGX of the day.

Reg	Aircraft	C/N
G-AKSZ	Taylorcraft Auster VD	1503
G-AWVA	Reims Cessna F172H Skyhawk	597
G-AYEF	Piper Pa-28-180 Cherokee	28-5815
G-BDNX	Grumman American AA-1B Trainer	AA1B-0590
G-BEZZ	Jodel D.112	397
G-BOIL	Cessna 172N Skyhawk	172-71301
G-BONW	Cessna 152	152-80401
G-BPVA	Cessna 172F Skyhawk	172-52286
G-CEOG	Piper Pa-28R-201 Arrow III	2837025
G-CFZX	Rotorsport UK MTOsport	RSUK/MTOS/013
G-CGFG	Cessna 152	152-85724
G-CJLL	Robinson R44 Raven II	11588
G-CTAB	Bellanca 7GCAA Citabria Adventure	114
G-GALI	AgustaWestland A109SP GrandNew	22336
G-GHST	Comco Ikarus C42C FB100 Cyclone	2203-7684
G-GULZ	Christen Eagle II	SEGLER 0001
G-GURU	Piper Pa-28-161 Warrior II	28-8316018
G-ISHA	Piper Pa-28-161 Warrior III	2842211
G-JADN	Pilatus PC-12/47E NGX	2339
G-KMKM	Rotorsport UK MTOsport	RSUK/MTOS/040
G-LACB	Piper Pa-28-161 Warrior II	28-8216035
G-NWEM	Eurocopter EADS EC135 T2+	270
G-OKED	Cessna 150L	150-74250
G-OTEC	Tecnam P2002 Sierra EA	LAA 333-14950
G-PITZ	Pitts S-2A Special	100ER
G-POLG	Eurocopter EADS EC135 T2	228
G-SLIV	The Airplane Factory Sling 4 TSi	LAA400-15445
G-UFly	Reims Cessna F150H	264
G-YROA	Rotorsport UK MTOsport	RSUK/MTOS/025



For this and more please visit www.neai.co.uk